

# OFFICE CONDO FOR SALE OR LEASE

BROWNSBORO OFFICE PARK  
6009-B Brownsboro Park Blvd  
Louisville, KY 40207



## Fully-Furnished Office Condo Exquisite Interior Finishes

- 3,600 square feet on three floors
- Six (6) private offices, with windows
- Kitchenette/bar areas on the 1st and 2nd floor
- Restroom on each floor
- All furnishings are included in the sale price and will remain with condo sale

### Location Features

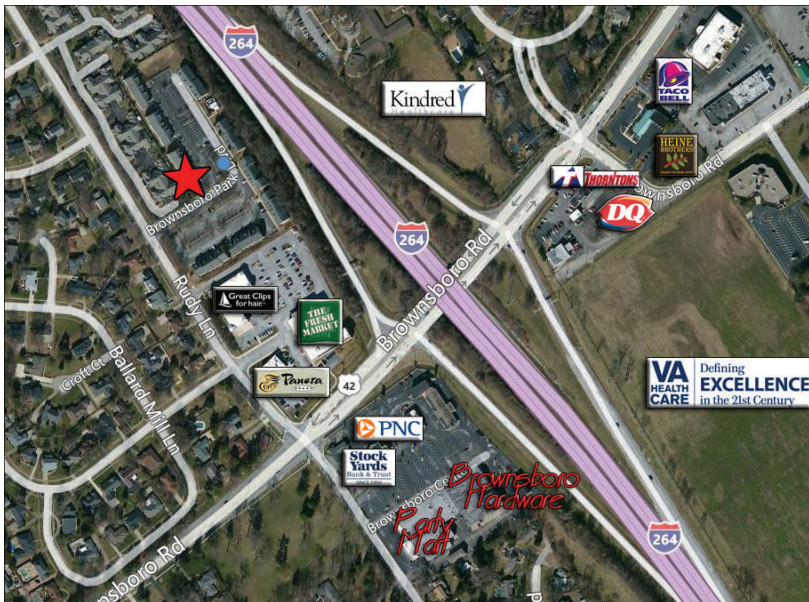
- Located just off Rudy Lane near the intersection of I-265 & Brownsboro Road
- Retail and restaurants nearby include Panera Bread, The Fresh Market, Party Mart and the new VA Hospital

**For Sale:** \$450,000

**For Lease:** \$15.00 PSF/YR, NNN

**For more information, please contact:**

**Dustin Coffman**  
(502) 774-0545  
(502) 379-6007  
dcoffman@ccre.biz

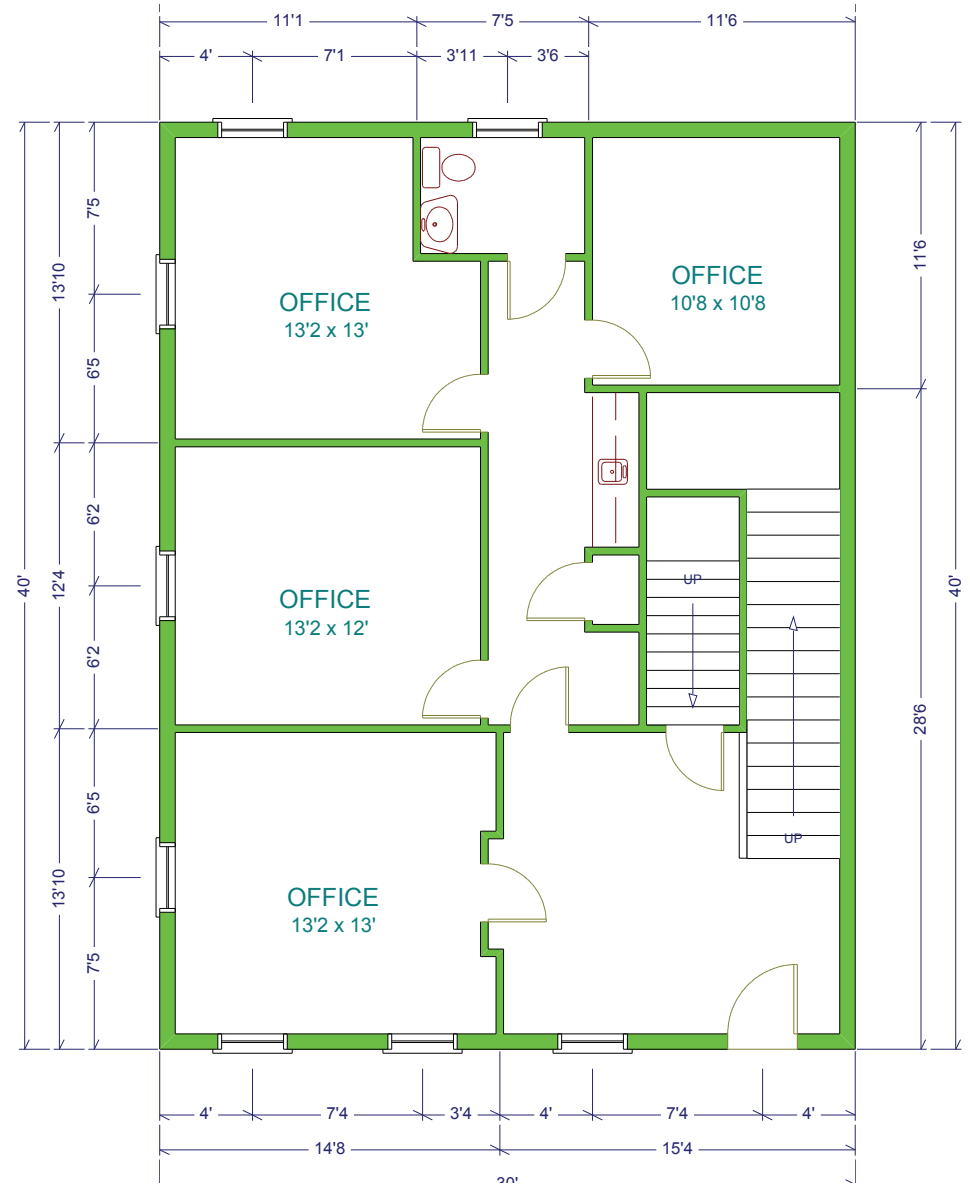


We obtained this information from sources we believe are reliable, however, we make no guarantee, warranty or representation about it. It is provided subject to the possibility of errors, omissions, change of price, rental or other conditions, prior sale, lease or financing, or withdrawal without notice. Images or plans presented are not architectural or "as built" drawings and are presented to give an approximation of space/dimensions and, therefore, no warranty or representation, express or implied, is made to their accuracy. It is your responsibility to independently verify that the property is acceptable to you and for your intended use.

10444 Bluegrass Parkway  
Louisville, Kentucky 40299  
Phone: (502) 379-6000 | [www.ccre.biz](http://www.ccre.biz)  
Licensed in Kentucky, Indiana and Ohio

# OFFICE CONDO FOR SALE OR LEASE

BROWNSBORO OFFICE PARK  
6009-B Brownsboro Park Blvd  
Louisville, KY 40207

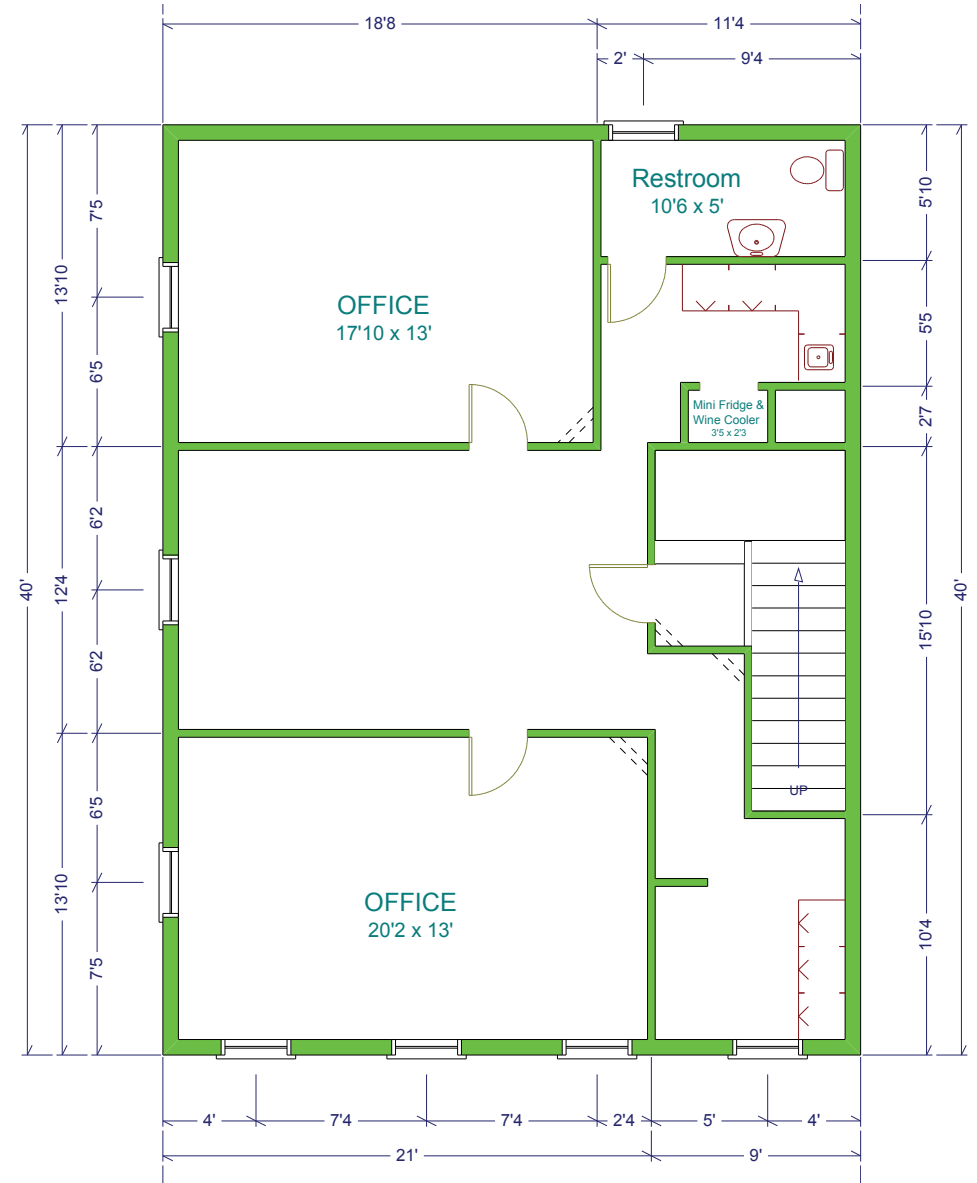


We obtained this information from sources we believe are reliable, however, we make no guarantee, warranty or representation about it. It is provided subject to the possibility of errors, omissions, change of price, rental or other conditions, prior sale, lease or financing, or withdrawal without notice. Images or plans presented are not architectural or "as built" drawings and are presented to give an approximation of space/ dimensions and, therefore, no warranty or representation, express or implied, is made to their accuracy. It is your responsibility to independently verify that the property is acceptable to you and for your intended use.

10444 Bluegrass Parkway  
Louisville, Kentucky 40299  
Phone: (502) 379-6000 | Fax: (502) 379-6220 | [www.ccre.biz](http://www.ccre.biz)  
Licensed in Kentucky, Indiana and Ohio

# OFFICE CONDO FOR SALE OR LEASE

BROWNSBORO OFFICE PARK  
6009-B Brownsboro Park Blvd  
Louisville, KY 40207

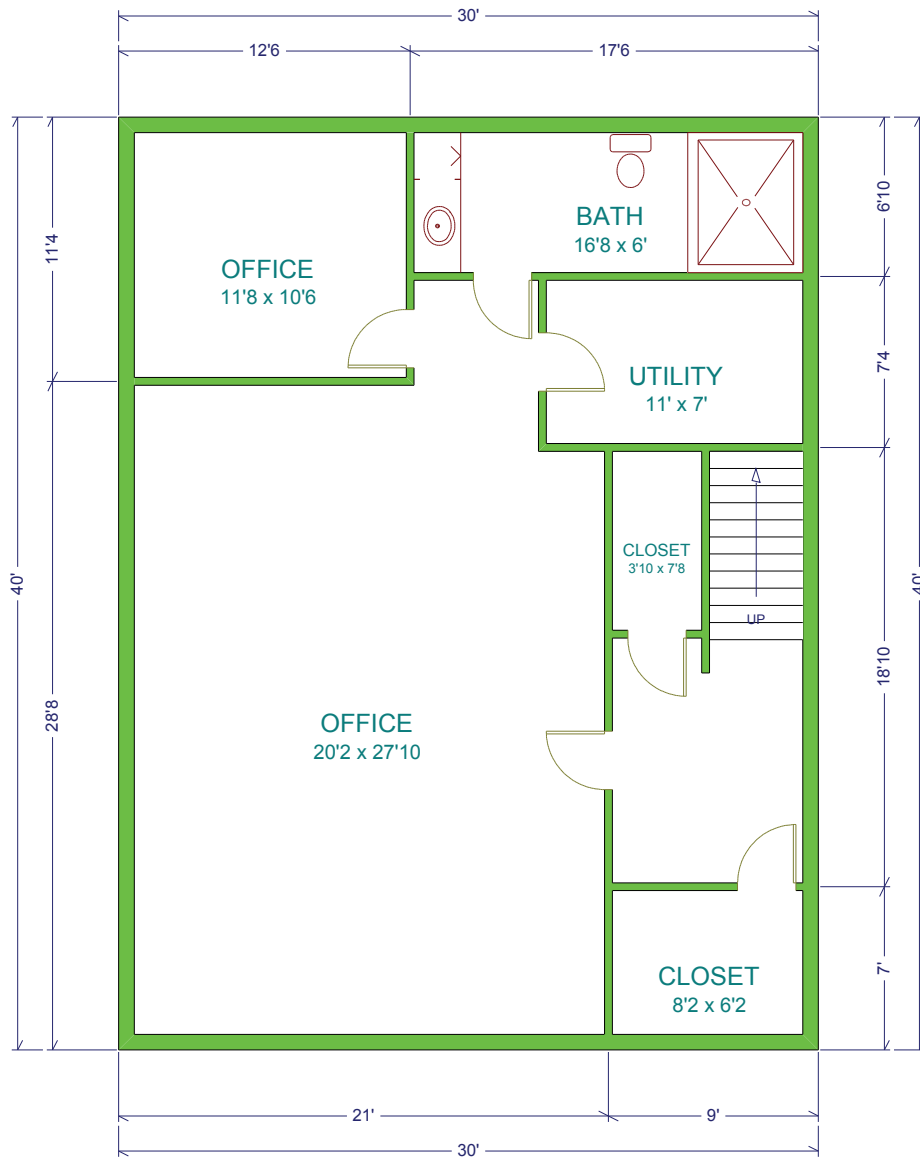


We obtained this information from sources we believe are reliable, however, we make no guarantee, warranty or representation about it. It is provided subject to the possibility of errors, omissions, change of price, rental or other conditions, prior sale, lease or financing, or withdrawal without notice. Images or plans presented are not architectural or "as built" drawings and are presented to give an approximation of space/ dimensions and, therefore, no warranty or representation, express or implied, is made to their accuracy. It is your responsibility to independently verify that the property is acceptable to you and for your intended use.

10444 Bluegrass Parkway  
Louisville, Kentucky 40299  
Phone: (502) 379-6000 | Fax: (502) 379-6220 | [www.ccre.biz](http://www.ccre.biz)  
Licensed in Kentucky, Indiana and Ohio

# OFFICE CONDO FOR SALE OR LEASE

BROWNSBORO OFFICE PARK  
6009-B Brownsboro Park Blvd  
Louisville, KY 40207



*For more information, please contact:*

**Dustin Coffman**  
(502) 774-0545  
(502) 379-6007  
dcoffman@ccre.biz



We obtained this information from sources we believe are reliable, however, we make no guarantee, warranty or representation about it. It is provided subject to the possibility of errors, omissions, change of price, rental or other conditions, prior sale, lease or financing, or withdrawal without notice. Images or plans presented are not architectural or "as built" drawings and are presented to give an approximation of space/dimensions and, therefore, no warranty or representation, express or implied, is made to their accuracy. It is your responsibility to independently verify that the property is acceptable to you and for your intended use.

10444 Bluegrass Parkway  
Louisville, Kentucky 40299  
Phone: (502) 379-6000 | [www.ccre.biz](http://www.ccre.biz)  
Licensed in Kentucky, Indiana and Ohio

