

# Build-to-Suit Opportunity

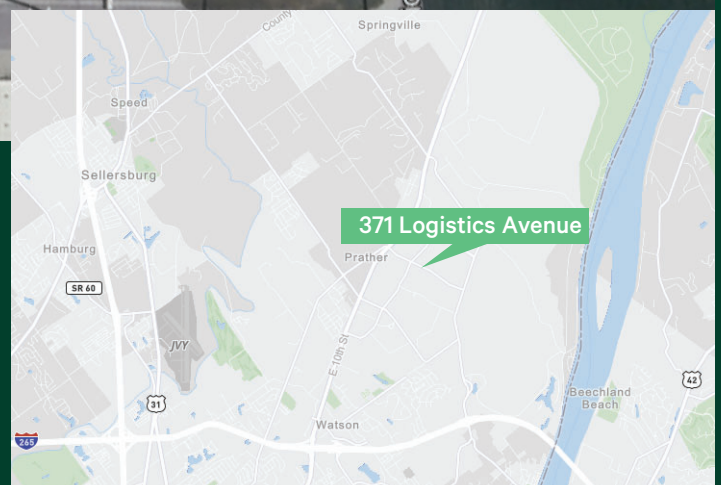
371 Logistics Avenue, Jeffersonville, IN 47130

+/-82,500-165,000 SF Available



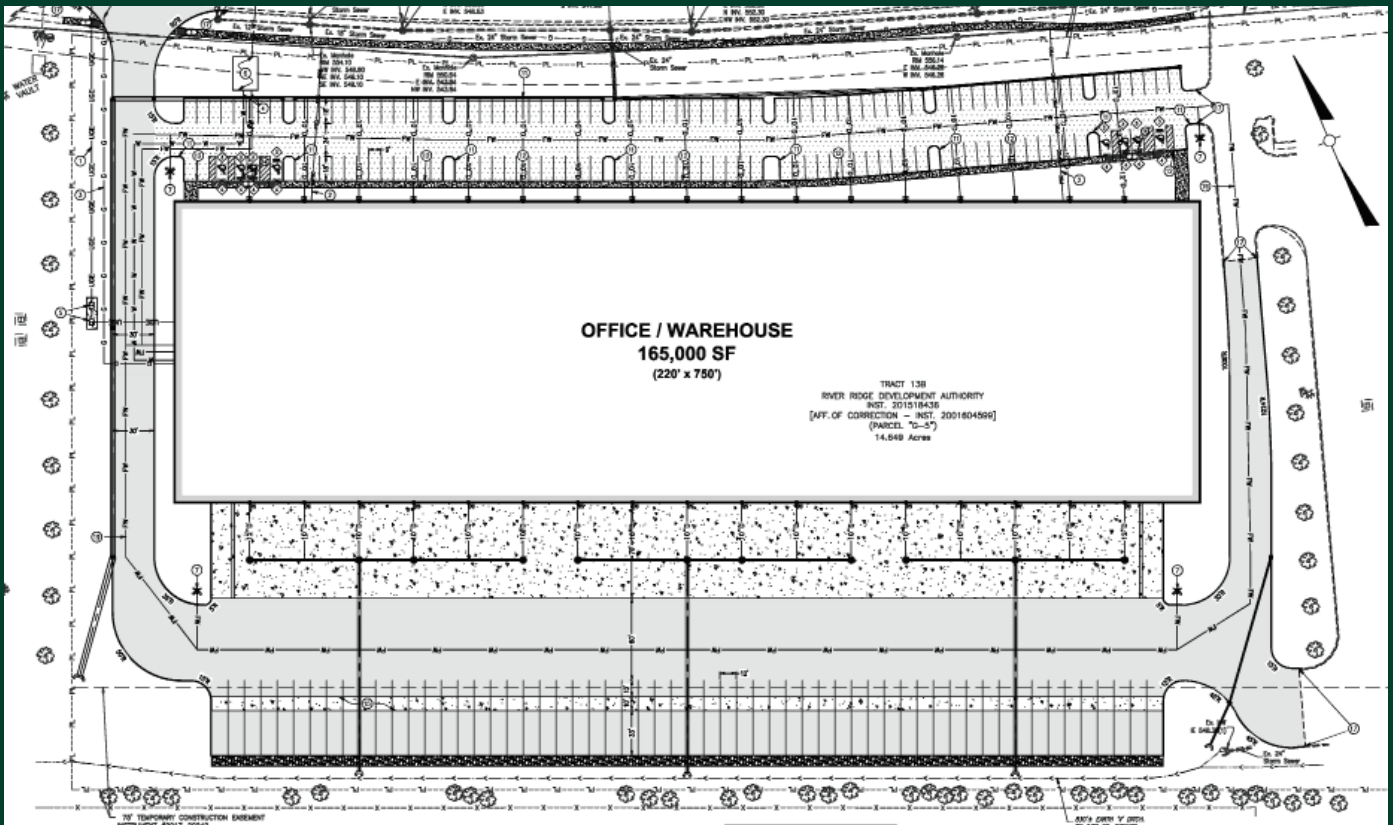
## Property Features

- + +/-82,500-165,000 SF Available
- + 10.96 Acres
- + Build-to-Suit Office
- + Zoned IR-INAAP
- + 146 Parking Spaces
- + Directly across from Meta and Canadian Solar
- + 1 mile from Gateway Off ice Park
- + 1.7 miles from exit 11 on I-265
- + Contact agent for pricing



## Contact Us

**Alex P. Grove**  
Senior Associate  
+1 502 412 7655  
alex.grove@cbre.com



## Contact Us

**Alex P. Grove**  
Senior Associate  
+1 502 412 7655  
alex.grove@cbre.com

© 2024 CBRE, Inc. All rights reserved. This information has been obtained from sources believed reliable, but has not been verified for accuracy or completeness. You should conduct a careful, independent investigation of the property and verify all information. Any reliance on this information is solely at your own risk. CBRE and the CBRE logo are service marks of CBRE, Inc. All other marks displayed on this document are the property of their respective owners, and the use of such logos does not imply any affiliation with or endorsement of CBRE. Photos herein are the property of their respective owners. Use of these images without the express written consent of the owner is prohibited.